

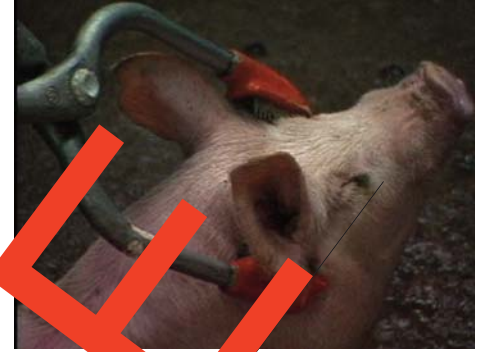
HUMANE SLAUGHTER OF PIGS



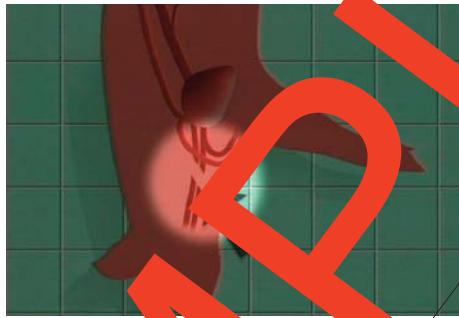
Electrode position



Alternative electrode position



Diagonal electrode position



Stick position

MINIMUM STUNNING CURRENT: 1.3 amps
ELECTRODE APPLICATION TIME: NOT LESS than 3 seconds
STUN-TO-STICK TIME: LESS than 15 seconds

Phase	Duration	Visual signs	Action
TONIC	10 to 30 sec	<ul style="list-style-type: none"> > animal collapses > body becomes rigid > no rhythmic breathing > head raised > hind legs flexed into body 	> stick during this phase if possible
CLONIC	15 to 45 sec	<ul style="list-style-type: none"> > involuntary kicking or paddling > relaxation 	> stick immediately
RECOVERY	30 to 60 sec	<ul style="list-style-type: none"> > resumption of normal rhythmic breathing > responds to painful stimuli > becomes visually aware > attempts to stand 	> stun with captive-bolt and stick immediately